

# **SOUTH EAST MARTS SALES NEWS**



*Auctioneers*

## **HAILSHAM'S HEADLINES**



*Auctioneers*

**WHAT A DAY, WHAT A DAY!**

**OVER 1,900 SHEEP**

**IT ALL HAPPENS AT  
HAILSHAM**

**THURSDAY 13<sup>TH</sup> OCTOBER 2022  
HAILSHAM MARKET**

**Market Street, HAILSHAM, Sussex. BN27 2AG**

**Tel:- 01323 844874**

**Mobile:- 07890 359622**

Roger Waters' Mobile 07860 663345 (Home 01273 832360)

**e-mail address ~ [info@southeastmarts.co.uk](mailto:info@southeastmarts.co.uk)**

**visit our web site ~ [www.southeastmarts.co.uk](http://www.southeastmarts.co.uk)**

# **360 + Store Cattle**

## **Monday 17th October 2022**

### **BREEDING CATTLE**

- 1 Ped. Lim bull from **N OSBORN**
- 1 Ped. South Devon bull from **A.E, C.K, & P.D BOURNER**
- 1 Hereford cross cow with twin AA x calves at foot, **A K BARR**
- 2 Sussex x & Limousin x cows with Limousin x calves at foot, **N OSBORN**
- 2 in-calf Dexter cows, **S GARNHAM**

### **STORE CATTLE**

- 14 Dexter steers & heifers, 6/24 months, **S GARNHAM**
- 20 British Blue cross steers & heifers, 11/12 months, **A K BARR**
- 20 Hereford x steers & heifers, 12 months, **JW STEELE & SON**
- 50 AAx, BBx, & Sussex x steers & heifers, 12 months, **AR LAVENDER**
- 25 Sussex cross steers & heifers, 9/16 months, **HJ BRICKELL**
- 13 Limousin x steers 15/18 months, **N OSBOURN**
- 31 AA x & Sim x steers & heifers, 16/29 months, **G KITTLE**
- 22 BBx, Limx & AA x steers & heifers, 17/22 months, **FS MAJOR & SONS**
- 20 British Blue cross steers & heifers, 24 months, **T CARR**

---

## **Next Store Cattle Sale**

### **MONDAY 31ST OCTOBER 2022**

*Present entries include*

- Forty one British Blue cross, Aberdeen Angus cross and Swedish Red cross steers, 24/25 months from **DJ Alexander**
  - Twenty six Aberdeen Angus cross suckler bred steers and heifers, 16/17 months from **FP Russell Farms**
  - Twenty eight Aberdeen Angus cross steers and heifers, 23 months from **Felton & Wallis**
- Please let us know what you have*



## **INCONCLUSIVE TB REACTORS**

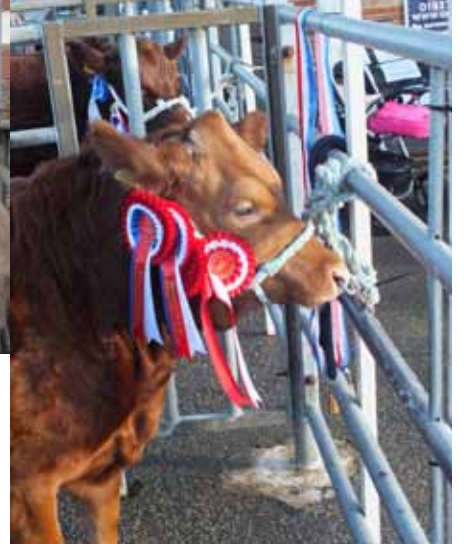
Have you had an Inconclusive Reactor (IR) on your holding ?  
Which has subsequently been resolved (ie passed it's TB test)  
Please check your 'IR's' before selling them

NB: They can only go direct to a slaughter house or AFU under licence.

**South East Marts are happy to arrange this for you.**

The only other option is to test the animal again, at your cost using an interferon-gamma blood test, then if this is negative, restrictions will be lifted.





# 180th

## **HAILSHAM FATSTOCK SHOW OF PRIME CATTLE, SHEEP & PIGS**

Wednesday 7TH December 2022

Hailsham Market  
Market Street  
Hailsham

# **Schedules out NOW**

Show secretary : Helen Kirby  
Email; [helen\\_kirby@nfumutual.co.uk](mailto:helen_kirby@nfumutual.co.uk)  
Tel: 01825 763578

# HAILSHAM MARKET - PRIMESTOCK DAY

## PRIME STOCK – WEDNESDAY 12TH OCTOBER

### **PRIME CATTLE (9)** (*UNDERAGE & OVERAGE*) **Auctioneer:** Roger Waters

*As we approach mid October cattle prices stay rock solid, whether clean or culls all are wanted - the bigger the better.*

**Mrs Richardson** sells non-fabbl Limousin x heifers, 219p per kg at **£1303.05** per head. **Bob Felton & Liz Wallis** have overage Beef Shorthorn x heifers to **£1365.10** and Hereford x steers to **£1244.60**.

### **CULL COWS (6)** **Auctioneer:** Roger Waters

*Native bred cattle to the fore!* **Shields Farming Partnership's** Aberdeen Angus x to 186p per kg, grossing **£1097.40**. Solid Sussex success once again at Hailsham - **Ian Williams'** heavyweight Sussex tops the day at **£1486.80!** ***More wanted to sell on...***

### **CALVES (64)** **Auctioneer:** Roger Waters

*The most calves penned for some time - the best made the best prices and thats the way it should be!* Congratulations to **J Cranfield & Son** of Bower Farm for having the best British Blue x bulls **£237, £217, £212, £198**. Hereford heifer calves **£205, £172**. Aberdeen Angus x bulls to **£150**. **Ford Partners** Fleckvieh x bulls **£132, £130**. British Blue x heifers **£140, £115**. **M Matthews** Simmental x bull **£125**. **Lower Claverham Farm** sells Aberdeen Angus x bulls to **£135**.

### **PIGS (21)** **Auctioneer:** Alex Moss

Pigs make their way from all parts of the South East this week!

Prime (10) - Outstanding run from **CH & PF Green**, East Sussex with their modern White porkers 85.5kg, 73.5kg and 75kg, reaching 142p per kg (twice) and 138p per kg, grossing at **£121.41, £106.50** and **£101.43**. From the West, **Mr Alderton** brings his heavier cutter boar weighing in at 108kg, reaching 150p per kg, grossing **£162**. From the Surrey division **Mr C Davies** brings his coloured native cutters with plenty of frame, weighing in at 80kg and 78.5kg, making 100p and 95p per kg and grossing **£78.50** and **£76**.

Stores (10) - **D H Neal** brings Duroc cross, smaller types reaching £15 per head - real value for money!

Sow (1) - **Leggatts Farm's** heavyweight Saddleback sow weighs 299kg and tops a respectable £50.

***Entered for next week - 1 Duroc sow, 14 quality store pigs 3 months old, 4 Oxford and Sandy Black store pigs 5 months old***

***Not to be missed!***

# HAILSHAM MARKET - PRIMESTOCK DAY

## ***SHEEP – 1922!!***

***Keep those sheep coming to Hailsham from Sussex, Kent, Surrey and beyond!***

### **PRIME LAMBS (542) Auctioneer: Nick Young Overall average 243.1p**

Nationally trade has slipped, but Hailsham produced a trade to be justifiably proud of and 10p per kilo above the national price! Meated lambs are wanted and best sold empty. Please shut them up before consigning to Hailsham. **Rex Smith** of Bethersden achieved the "King" price today of **£117**, closely attended by **Michael Gauntlett** of Chichester at **£116**.

**Leading prices:** Rex Smith £117, £116 (twice), H J Gauntlett & Sons £116 (twice), £115 (twice), £114, R D & D R Godden £115, Frederick & Sons £115, £114, R Miles £115, C G & A A Brooker & Son £115, Norton Farm Partnership £114, C Sargent £113, G Harvey £112

**Leading prices per kilo:** Bungehurst Farm Ltd 279.1p, R Mair & Son 276.3p, R Miles 273.8p, C Sargent 272.7p, 256.8p, 251.3p, Mrs D Barr 263.4p, 256.3p, Rex Smith 256.6p, 252.2p, C Bull 256.4p, Norton Farm Partnership 246.8p, H J Gauntlett & Sons 244.4p, 242.6p, J W E Hobden 242.1p (twice)

### **STORE LAMBS (984) Auctioneer: Nick Young**

A fabulous entry of store lambs sold to a packed audience of buyers. The Hailsham Hall of Fame tells the tale, grass in abundance and trade aplenty. Certainly they are economically more valuable than the finished commodity. Keep them coming, demand is insatiable! **F P Russell** leads the returns at **£97**.

**Leading prices:** F P Russell Farms £97, £92, R G Weller £93, £84, N Reader £90, £86, A Brewer £90 (twice), R Russell £89, C Watkins £89, J H & P M Playfoot £86, R Mair & Son £86, G Harvey £85, H J Gauntlett & Sons £85 (twice), P M Barnard £84

### **CULL EWES (353) Auctioneer: Nick Young**

A shorter entry than hoped for; demand is constant especially for the biggest and best. Keep these ewes coming, big runs are definitely preferred. **Terry Wigmore's** ram is top at **£137**, closely followed by **Michael Gauntlett's** ewe at **£125**.

**Leading prices:** T M Wigmore £137 (Ram), £120 (Ram), £100, H J Gauntlett & Sons £125, £104 (twice), J Visser £122 (Ram), N Bowie £120, R G Weller £118, J & S Harmer £115, £108 (twice), M Otway £114, Sterling Farms Ltd £105, G Harvey £104, J J Bull £100

### **BREEDING SHEEP (42) Auctioneer: Nick Young**

A sudden upturn in trade took us by surprise, in particular **Charles Bull's** Southdown shearling ewes at **£200**, **J Worsfold** has Hampshire Down x Mule shearling ewes at **£140**.

**Rams - Anthony Goldsmith's** Texel shearling rams sell to **£300** and **£270**, closely followed by **J Visser's** Beltex at **£220**.

*Please let us know what you have so that we can inform our many home and away buyers  
Ring the market hotline on 01323 844874 or text the Sheep hotline 07890 359622*





# J. HOBDEN AGRI

*GET IN TOUCH FOR SHEEP SHEARING, ANY SIZE FLOCK.*

**LIVESTOCK – FENCING – AGRICULTURAL CONTRACTING**  
**TEL: 07786 186 226**

## **WANTED RELIEF MILKER**

120 COW HERD, LEWES AREA. 16X16 HERRINGBONE PARLOUR.  
FOR FURTHER INFORMATION CONTACT  
PHILLIP PILE 07932 162760

**3 Labrador dog pups**  
**Approx 22 weeks old, KC registered**  
**07718 532971**

## **CIVIL ENGINEERING & GROUNDWORKS**




01342 325738 | [leggatplant.com](http://leggatplant.com)


LEGGAT PLANT & CIVILS LTD ARE BASED IN WEST SUSSEX, SPECIALISING IN GROUNDWORKS AND CIVIL ENGINEERING FOR COMMERCIAL, AGRICULTURAL AND RESIDENTIAL PROJECTS. GET IN TOUCH TODAY!

LIVESTOCK & CROP STORAGE SOLUTIONS-LAND DRAINAGE SYSTEMS-NEW SERVICES INSTALLATION-FOUNDATION EXCAVATIONS-CONCRETING AND MUCH MORE!




 [sales@leggatplant.com](mailto:sales@leggatplant.com)



 [@leggatplant](https://www.facebook.com/leggatplant)



 [@leggatplant](https://www.instagram.com/leggatplant)

**K&T**  
FOOTWEAR

07715 035 131

LEADING  
FOOTWEAR  
SUPPLIERS  
EST. 1962.

@ info@kandtfootwear.co.uk W www.kandtfootwear.co.uk



# SUSSEX STEEL CONSTRUCTION

DANIEL HUNTER-EVANS  
TEL: 01435 661453  
MOB: 07951 438793  
EMAIL: DANIEL@SUSSEXSTEELCONSTRUCTION.CO.UK



GRAHAM LONG  
TEL: 01435 865370  
MOB: 07795 226296  
EMAIL: GRAHAM@SUSSEXSTEELCONSTRUCTION.CO.UK

AGRICULTURAL & INDUSTRIAL  
BUILDINGS, REPAIRS & RENOVATIONS



GENERAL MAINTENANCE WEATHER DAMAGE EMERGENCY REPAIRS  
NEW BUILDINGS SUPPLIED & ERECTED



## **CLEAR, RELEVANT & PROFESSIONAL ADVICE WHEN YOU NEED IT**

**Nick Young FRICS**

**01435 865077**

e-mail: [nickyoung@watsonsestates.co.uk](mailto:nickyoung@watsonsestates.co.uk)


## **Farm insurance, the way it should be**

We're a family-run business and pride ourselves on forging long term relationships with our farming and agricultural clients. Covering the South East, South West and Midlands, we deliver an extensive range of farm, agri business and equine policies tailored to you.

[www.county-insurance.co.uk/farms](http://www.county-insurance.co.uk/farms)

Farm & Equine **01865 844985**

General **01865 842084**

 Follow us **@County\_Farm**

